

# *Nueva Cajamarca*

## *2014*

*Caving Expedition with French, Peruvian and Brazilian  
Members in Alto Mayo Massif (San Martin, Peru)*



Organization Groupe  
Speleologique  
Bagnols-Marcoule  
(Gard, France) and  
Espeleo Club Andino  
of Lima (Peru)  
with participation  
of members of  
GBPE (Bambu ) of  
Belo Horizonte (Brazil)

*2nd to 14th  
september 2014*

## 2 – Team 2014



Sonia Bermudez Lozano



Patrice Baby



Lucia Rimachi Sialer



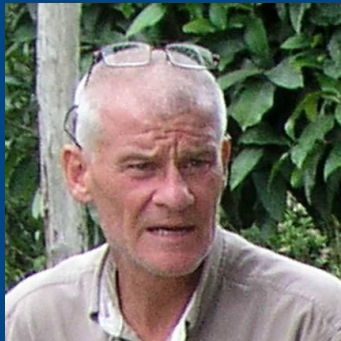
Jean-François Perret



Nathalie Klein



Clémentine Junquas



Jean-Denis Klein



Joël Raimbourg

The Espeleo Club  
Andino (ECA) of Lima  
and the Groupe  
Spéléologique Bagnols-  
Marcoule (GSBM).



James Apaéstegui

### 3 – Team 2014



Jean Loup Guyot



Patrick Romieux



Sergio Morera Julca



Anne Grégoire



Daniela Rivas Aybar



Jean-Yves Bigot



Liz Hidalgo Sanchez



Angela Ampuero Grandez

The Espeleo Club Andino (ECA) of Lima and the Groupe Spéléologique Bagnols-Marcoule (GSBM).

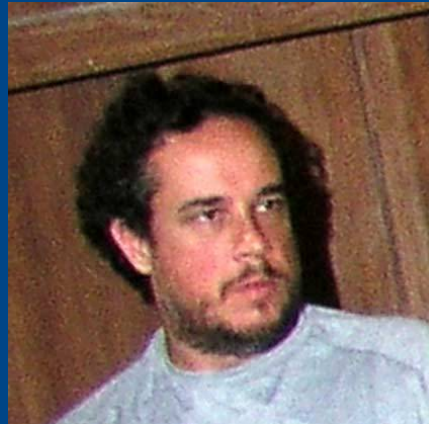
---

---

## 4 – Team 2014



Ezio Rubbioli



Vitor Moura



Lilia Senna-Horta

The Grupo Bambuí de Pesquisas Espeleológicas (GBPE) of Belo Horizonte (Brazil).



Alexandre Lobo



Luciana Alt



Augusto Auler

## 5 – The local guides



Claudia Vargas, made responsible for tourism in Nueva Cajamarca town



Lazaro Herrera Ruiz, guide of Palestina Cave



Celmira Guevara Gonzales, guide of Palestina Cave



Samuel Quispe, guide in Naciente del Rio Negro



Celmira Bustamente Torres, president of Palestina Association



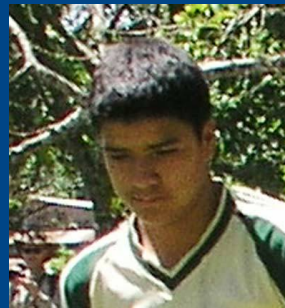
Elmer Cruz, guide in Guayaquil

---



Salvador Campos Rodrigo, guide in Bellavista

---



Wilson Silva, guide in Aguas Claras

---



Alexander Garay, guide in Aguas Claras

---

## 6 – Lima-Cajamarca

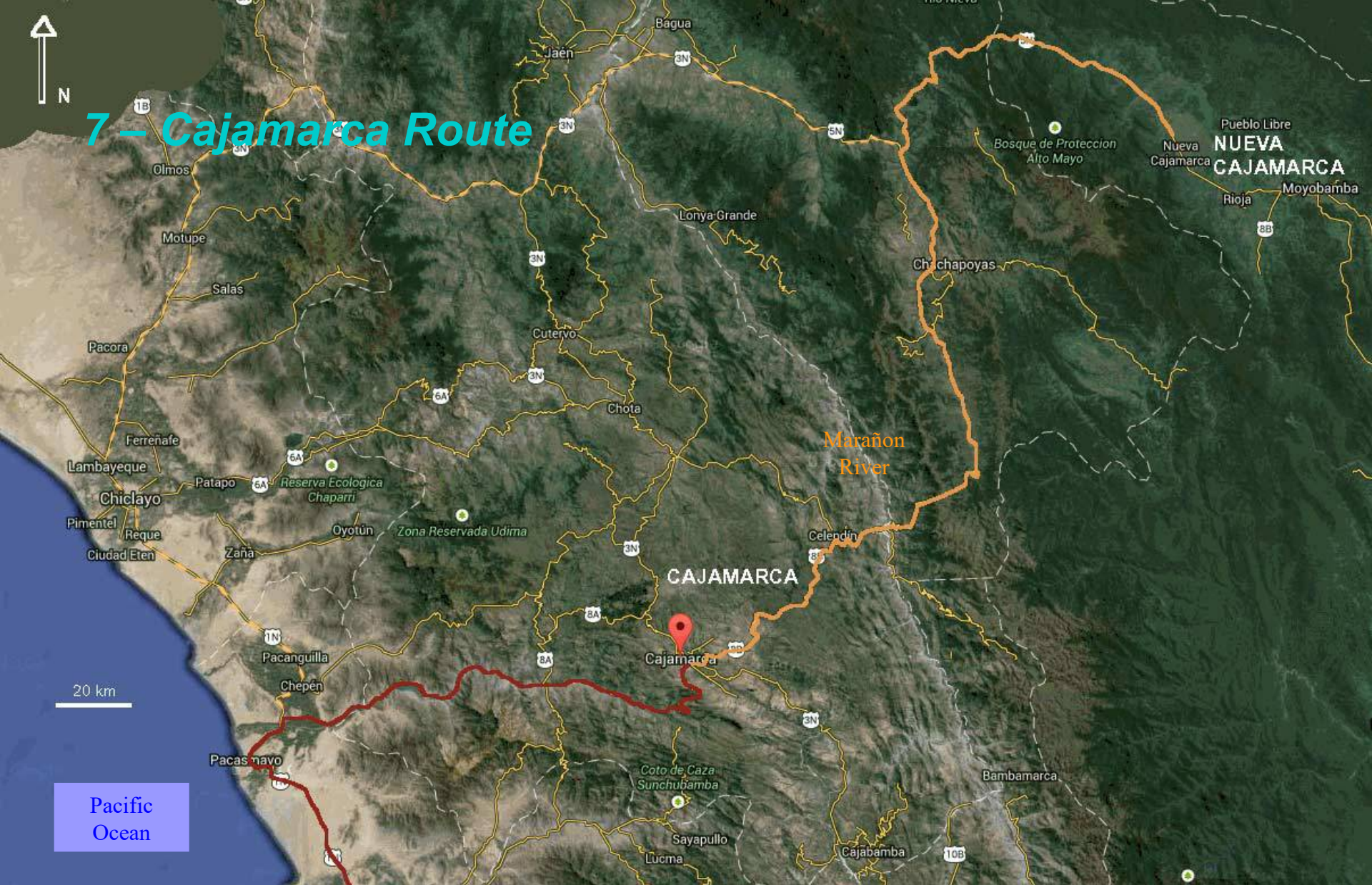


Tuesday the 2nd of september 2014, we went on the panamerican road always under construction. For once, we will take the Cajamarca road that many of us don't know it.

Pacific Ocean in Tortugas

We arrived about 10 h (pm) without to know if it exists an opened hotel in this town. But we have found...





## 7 – Cajamarca Route

Marañón River

CAJAMARCA

NUEVA CAJAMARCA

We have to go to Cajamarca, because we have to get back measuring tools in Timbuj Spring.  
The road is asphalted now, it's better than before and more comfortable.  
In the north of map, there is a normal route (dotted line).

## ***8 – From Cajamarca (Andes) to Nueva Cajamarca (Amazonia)***



3-9-2014

We have to cross the Andes Mountains Range before to arrive at the end of our travel.  
Crossing the towns of Celendin, Leymebamba, Pedro Ruiz and Pomacochas,  
but the more impressive part of route is the Marañon Valley.

---

---



## 9 – Endless Descent

From the altitude of 3105 m (pass), an endless descent begins towards the Marañon River.



The road is very narrow and cliffs very steep. You must follow well the road. Downwards, we catch sight of Marañon River flowing at 850 m of altitude.

## ***10 – Descent towards Marañon River***



3-9-2014

Little by little, we leave the high cultivated plateaus and go to zone more and more arid.

---

---

## ***11 – Desolation and Cactus***



3-9-2014

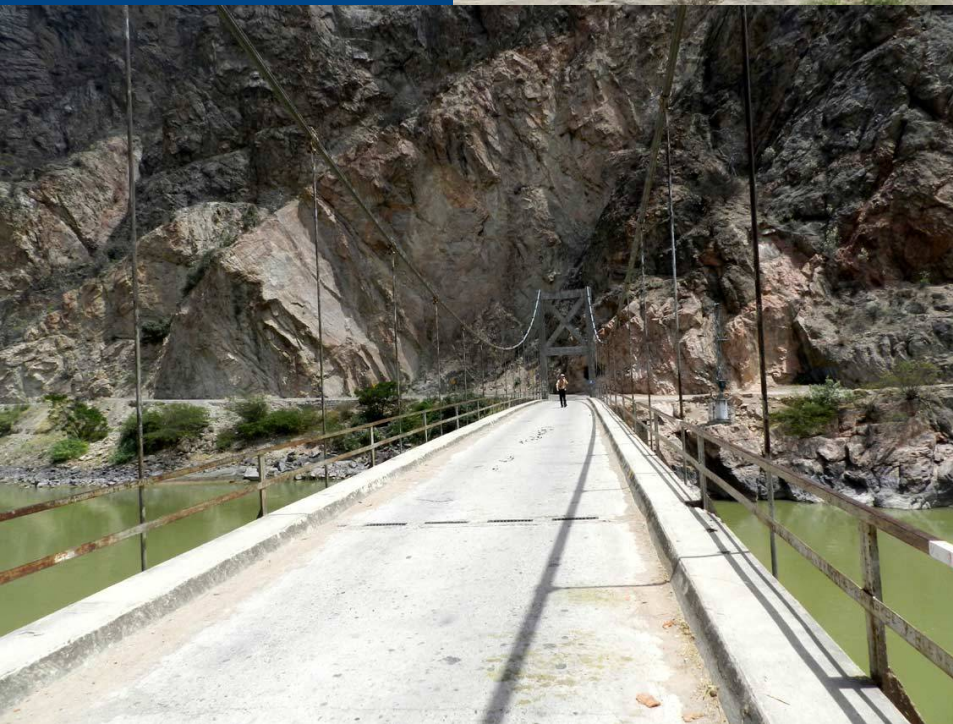
The landscape is very dry, because the summits of mountains stop the clouds coming from Amazonian Basin. The valleys receive a very little rains and arid vegetation grows like cactus.

## 12 – Crossing the Marañon River

The Marañon River flows at the altitude of 854 m. In the upstream part, its valley is parallel of cordillera axis (South-North).



3-9-2014



The Chacanto Brigde (Balsas) allows to cross the river and to go up after on the other slope (cordillera Cala Cala). The difference of altitude is more than 2700 m.

## 13 – *The Selva Alta*



3-9-2014

We are going to cross the pass (alt. 3595 m a.s.l) through the new mountains range. The cordillera Cala Cala stops the clouds and favours the high rainforests (Selva Alta) between altitudes from 2500 to 3500 m. However, this rainforest can't spread on the exposed parts and grows in the sheltered small valleys.

## 14 – From Leymebamba to Palestina

In the Utcubamba Valley, we get back our measuring tools (hydrology) in the Timbuj Spring.



We arrived at Nueva Cajamarca, exactly at Palestina, the 3rd of september 2014 about 9h30 pm.

# 15 – Welcome to Palestina



Tomorrow 4th of september about 7 h pm, a reception is organized in Palestina by local authority of Nueva Cajamarca for our arrival. We are received like VIP.



## 16 – Palestina Village



This house of Palestina Village has been transformed into restaurant for us.



# 17 – Welcome to Palestina Village

6-9-2014



A little song is sung  
for Patrice Baby, to  
say welcome.

## 18 – Palestina Cave

A team made up Joël, Patrice, Jean-Yves and William, goes to the bottom of Palestina Cave.

The target is to dig at the end of cave.



This goal is too much ambitious and the team prefers to take some pictures in the great chamber. In addition, a protection tape is rolled out on the floor.

## 19 – All Together in Palestina

During this time, Clémentine, Daniela, Jean Loup, Liz, Lucia and Nathalie explore a new continuation in fossil galleries surveyed (143 m long).



5-9-2014

Jean-Denis, Jef and Patrick put the iron cable above the first lake. While James guides a group until the second lake.

## 20 – All Together in Aguas Claras

We have decided to go together to Aguas Claras. We have to visit a well-known cave, called Tishuca, with our guides.



The water of Aguas Claras River come from the nice vaclusian spring. It exists a relationship between the size of Aguas Claras Spring and the Tishuca Cave with its big chambers.

## 21 – Tishuca



There are many people inside.  
But the rooms of this great cave  
are really big.



## 22 – Tishuca Cave

Several survey teams are made up and the work is shared.



6-9-2014



Unfortunately, there is no continuation. But we have surveyed all in this cave.

We were come in this place for it.  
Weren't we ?

District de Pardo Miguel,  
Province de Ríca,  
Région de San Martín,

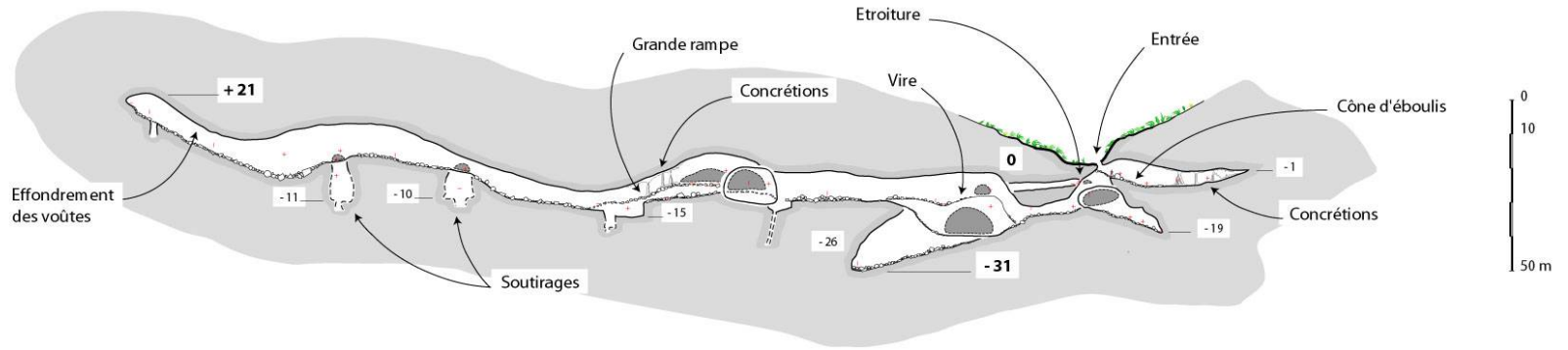
# 23 – Tishuca

## Cueva de Tishuca

Coordonnées:  
Longitude : -77.5782  
Latitude : -5.7301  
Altitude : 1120 m

Pérou

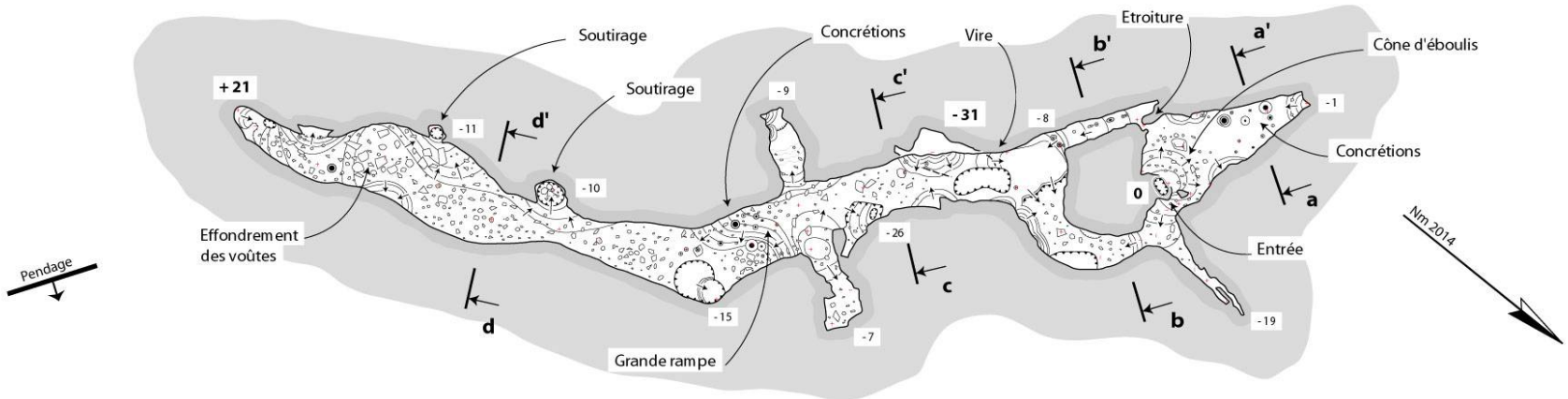
### COUPE projetée (N50°)



Développement : 655 m  
Dénivellation : 52 m (-31, +21)



### PLAN



Espeleo Club Andino de Lima (ECA),  
Groupe Spéléologique de Bagnols-Marcoule (GSBM),  
& Grupo Bambuí de Pesquisas Espeleológicas (GBPE) de Belo Horizonte

Relevés topographiques du 6 septembre 2014  
Augusto Auler, Jean-Loup Guyot, Jean-Yves Bigot,  
Ezio Rubbioli, Lilla Senna-Horta & Alexandre Lobo  
Compas et clinomètre Suunto + Lasermetre  
Synthèse et dessin : Jean-Yves Bigot

## 24 – The Parties in Palestina Village

Every evening, we eat in Palestina Village. The food is cooked by a very good chef.



5-9-2014



6-9-2014

It's the moment for everybody to meet and to decide the tomorrow schedule.



## 25 – Diamante Cave



7-9-2014

We have to survey the Diamante Cave, a touristic cave well known and closed by a door. We have a women's team very motivated and ready to make up the topography of this cave.

## 26 – *Diamante Cave*



There are two instructors, Lobinho and Jean-Yves, and four students : Clémentine, Daniela, Liz and Lucia.



The most interesting in this cave is its fillings. These fillings come from outside, probably brought by Naranjos River. In fact, this river cross the geological formations (cristallin rocks) in the middle of the Alto Mayo Anticlinal. We can see cristallin pebbles inside the cave in the terraces.

# 27 – Diamante Cave

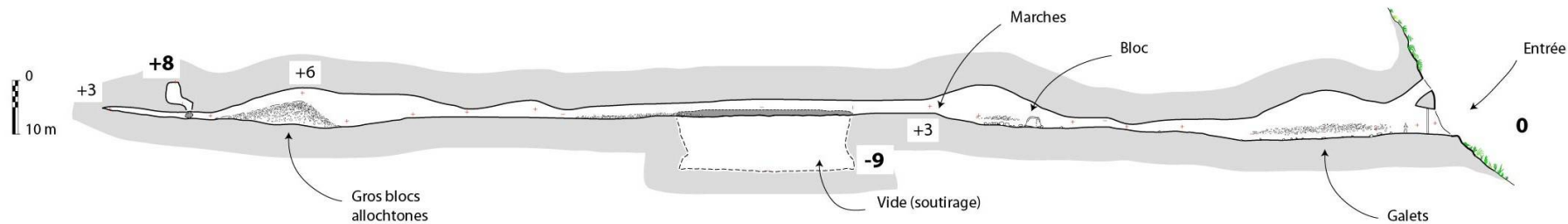
District de Pardo Miguel,  
Province de Rioja,  
Région de San Martin,

Pérou

## Cueva del Diamante

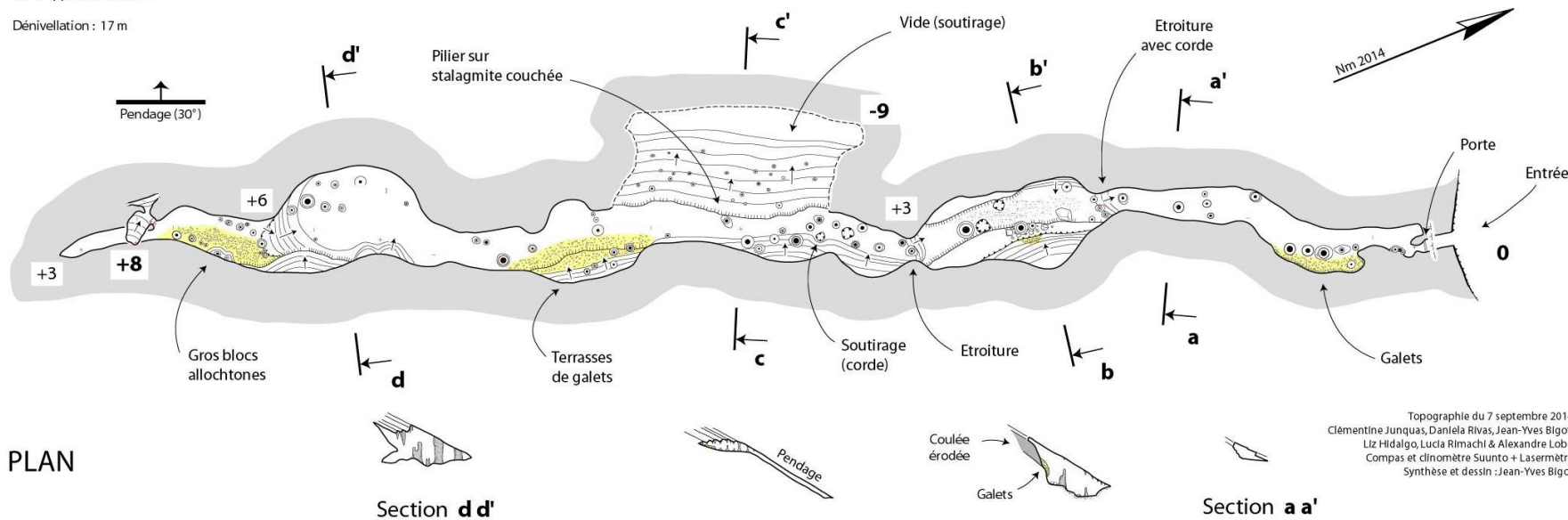
COUPE projetée (N120°)

Coordonnées :  
Longitude : -77,5259  
Latitude : -5,7533  
Altitude : 1070 m



Développement : 282 m

Dénivellation : 17 m



PLAN

Section d d'

Section c c'

Section b b'

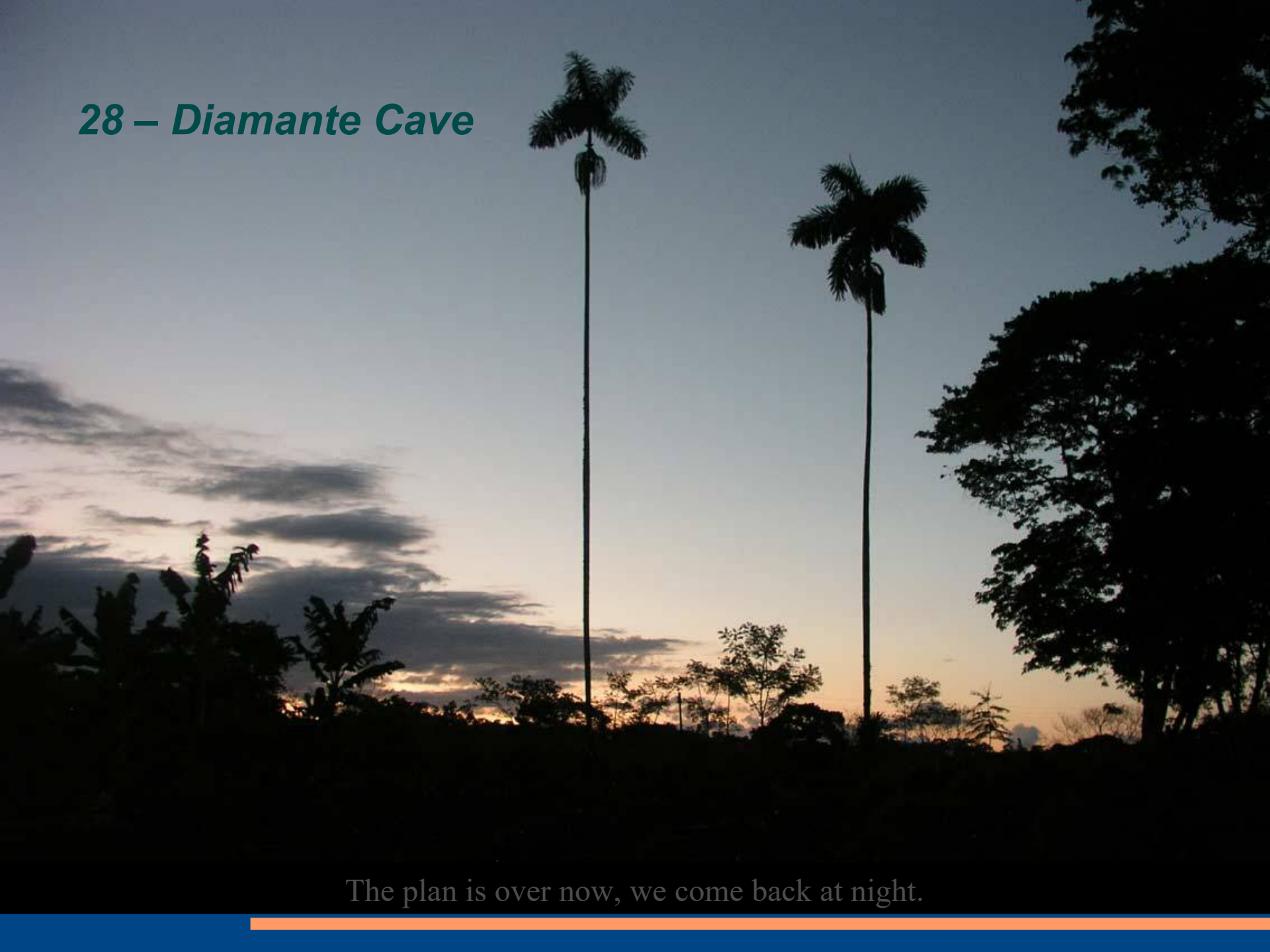
Section a a'

Espeleo Club Andino de Lima (ECA),  
Groupe Spéléologique de Bagnols-Marcoule (GSBM),  
& Grupo Bambuf de Pesquisas Espeleológicas (GBPE) de Belo Horizonte

Topographie du 7 septembre 2014  
Clémentine Junquas, Daniela Rivas, Jean-Yves Bigot,  
Liz Hidalgo, Lucia Rimachi & Alexandre Lobo  
Compas et clinomètre Suunto + Lasermètre  
Synthèse et dessin : Jean-Yves Bigot



## 28 – *Diamante Cave*



The plan is over now, we come back at night.

## 29 – Cable Preparation

The first mission is the cable task. We have to prepare this cable before the installation in Palestina Cave. The goal is make possible the visit without to soak. And why not, organize safari in wild part of cave.



Because the beautiful parts are behind the deep lakes. We have to install two cables above the water. After, everybody will be able to cross the lakes and see the underground river flowing in the nice galleries.

## 30 – Palestina Cave

Preparing the cable.



5-9-2014



7-9-2014

The cable works in Palestina Cave make progress. Jean-François Perret, Patrick Romieux and Jean-Denis Klein are engaged. With the other teams, they are just arrived at the camp, it's time to have dinner.

## 31 – Huaman Cave



A target has been assigned : exploration of « Tragadero de Huaman » (depth : -55 m) explored in february 2013 by the ECA team.

First, we have to finish the cave before to begin exploration of others caves.

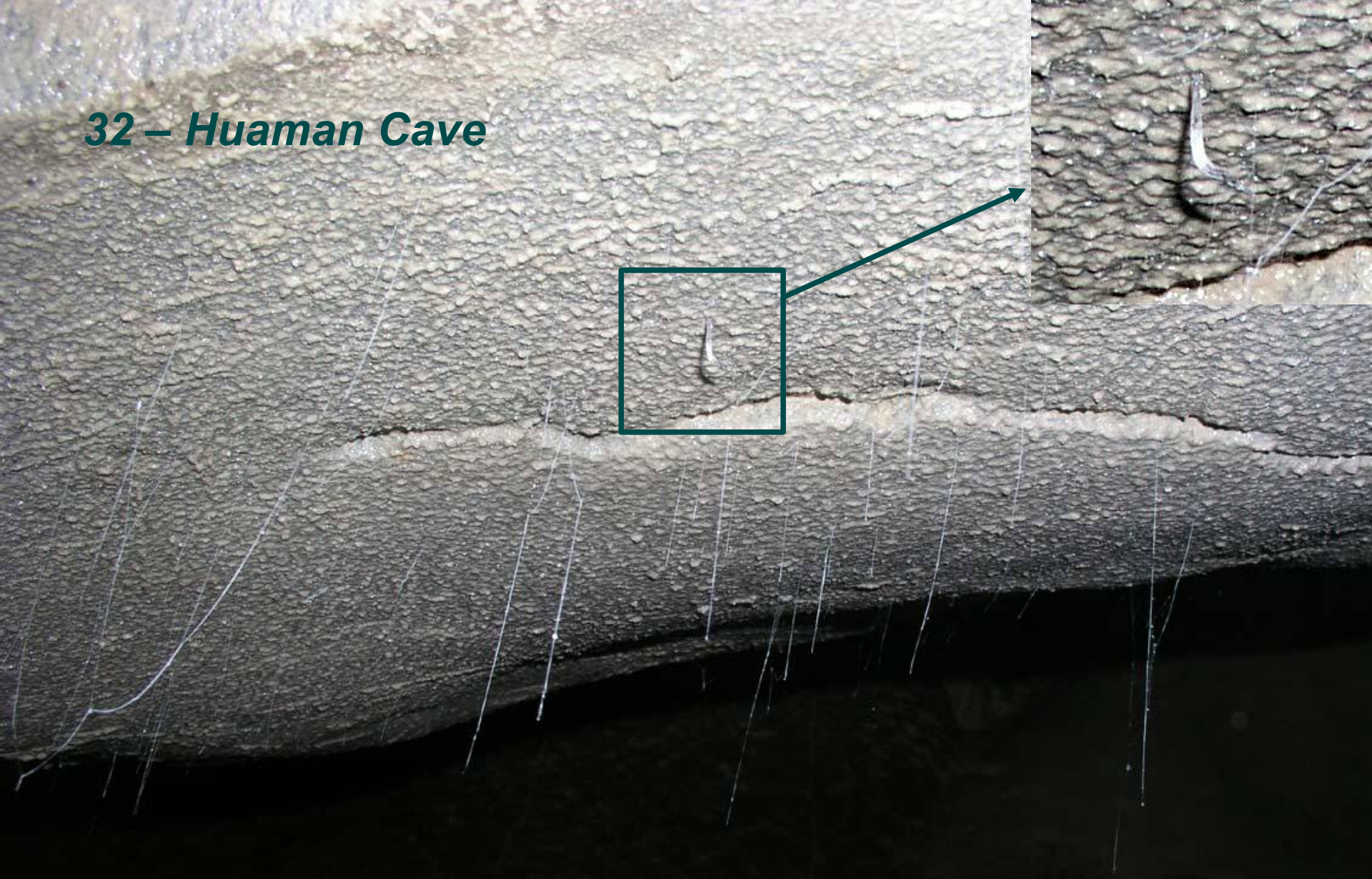
Jean-Yves, Joël, Luciana, Nathalie and Vitor are guided by Elmer Cruz untill the Tragadero de Huaman (Guayaquil).

More, this cave is opened in the Nueva Cajamarca Territories. And of course, its fauna is absoltely astonishing.



Mygale Spider at the bottom of entrance pit.

## 32 – Huaman Cave



A strange fauna lives in the cave roof.  
There is a worm (dipteran larva) making filaments.  
These filaments allow the capture of flying insects (mosquitos, flies, etc.).



## 33 – Huaman Cave

A new incursion in the Huaman Cave is organized, because we have to finish the exploration. And we cannot leave ropes and gear inside.



9-9-2014



We are only three : Jean-Denis Klein, Patrice Baby and Jean-Yves Bigot for this assigned work.

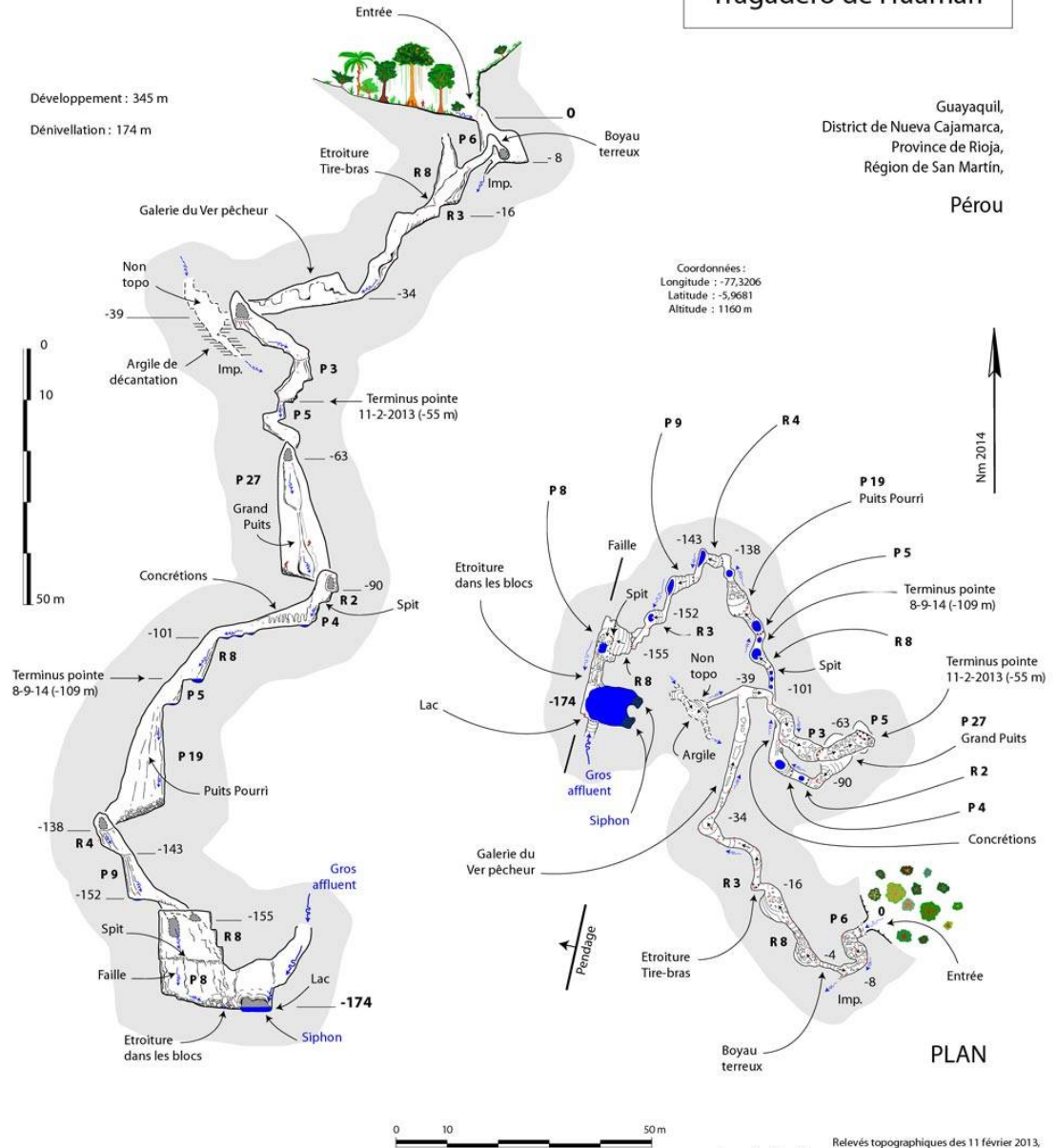
Fortunately, we touch the bottom (sump-lake) at the depth of 174 m. The goal is achieved.

# 34 – Huaman Cave

At the bottom, there is no future, not any continuation. We change environment from dry zone to wet zone with sump.

We are very close to base level controlled by Rioja Plain where the most of springs appear.

COUPE projetée (N270°)



Espeleu Club Andino de Lima (ECA),  
 Groupe Spéléologique de Bagnols-Marcoule (GSBM),  
 & Grupo Bambuí de Pesquisas Espeleológicas (GBPE) de Belo Horizonte

Relevés topographiques des 11 février 2013,  
 James Apaéstegui, Jean Loup Guyot, William Santini et Fabien Renou,  
 8 septembre 2014, Joël Raimbourg, Luciana Alt et Jean-Yves Bigot,  
 et 9 septembre 2014, Patrice Baby, Jean-Denis Klein et Jean-Yves Bigot.  
 Compas et clinomètre Suunto + Lasermètre  
 Synthèse et dessin : Jean-Yves Bigot

## 35 – The movie « Peru Extreme Planete »

**Planète Extrême**  
de l'Amazonie au Pacifique **3** milieux extrêmes

We take some pictures in Palestina Cave with the movie team.

The activities of the Institut de recherche pour le développement (IRD) are related.

Three different environments are shown : the Amazonian forest, the Andes and the Pacific Ocean.

**French Connection Films**

**Codex Now**

**et l'IRD** présentent

James Apaéstegui will guide the biologist Anne Grégoire in the Palestina Cave.

## 36 – *The movie*

The cave is illuminated with strong lights.



10-9-2014

In the cave, everybody (ECA-GSBM) helps the movie makers.

## 37 – The movie « Peru Extreme Planete »

Jean-Thomas Renaud and his assistants have time to take scenes. These scenes will illustrate the research activity of IRD in Underground Hydrology.



## 38 – Bellavista

An interesting goal seen in 2013 is the Tragadero de Bellavista. Jean-Denis, Nathalie, Patrice and Jean-Yves go up to the Bellavista Village.

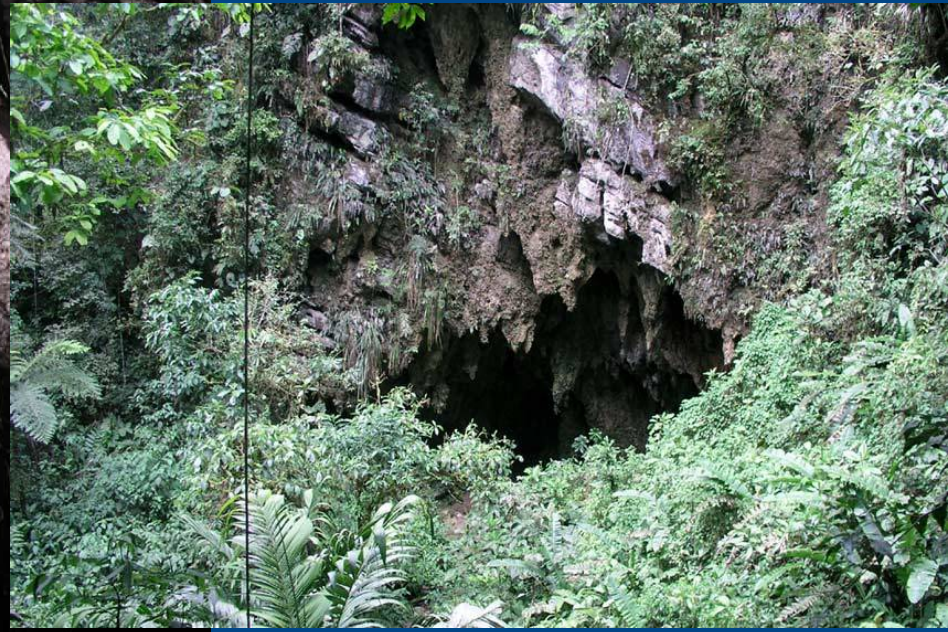


Of course, the cave has been explored by english cavers of Bristol (BEC) in 2003, but their visit seems very furtive, because we haven't found any spit or evidence of their exploration.

## 39 – Bellavista



The cave entrance is located in the heart of jungle. A Guacharos colony lives inside the cave. It's easy to note because the seeds grow on the ground.

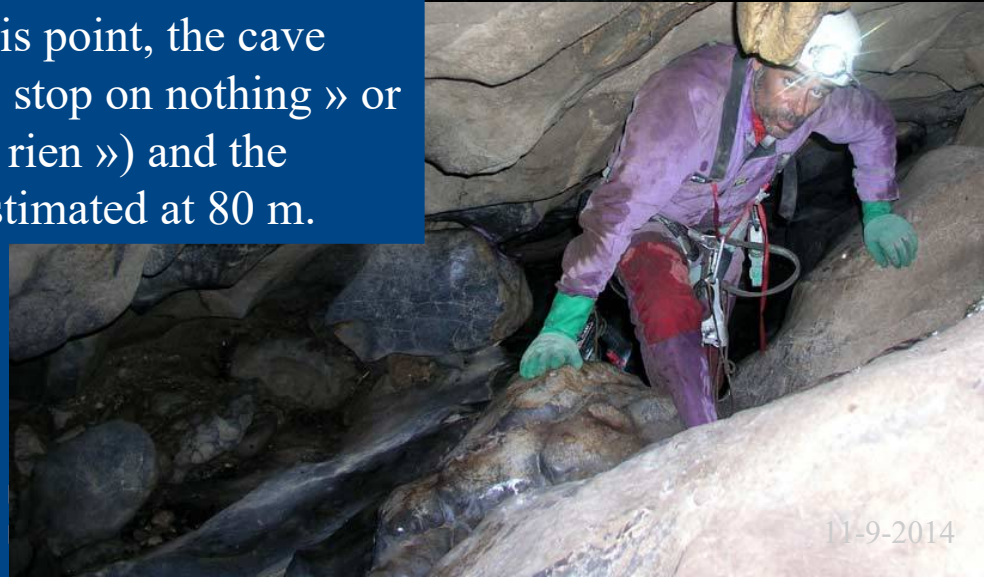


## 40 – Bellavista

Jean-Denis Klein installs the rope in the pit. And we can arrive at the bottom of Guacharos pit (-61).



Beyond this point, the cave goes on (« stop on nothing » or « arrêt sur rien ») and the depth is estimated at 80 m.





## 41 – Bellavista

We reach the bottom of Guacharos pit (-61 m) where it exists an impressive accumulation of guano.



11-9-2014

Despite our researchs, we haven't found the Aguaruna Native fallen in the pit, a story that our guide has told us...

# 42 – Bellavista

Some incidents have taken place in the evening. The mayor of Bellavista Village is also our guide (Salvador) and our underground adventure changes in the demonstration of local justice.

Because one of young men of Bellavista Village have stolen our tablet computer in our bags...

The local justice is improvised in the school village and the militia boss of Bellavista questions a guy suspected of tefh.

Some hours are enough to find the guilty party and our affair is elucidated : we come back to the camp at midnight. It was a hard day.

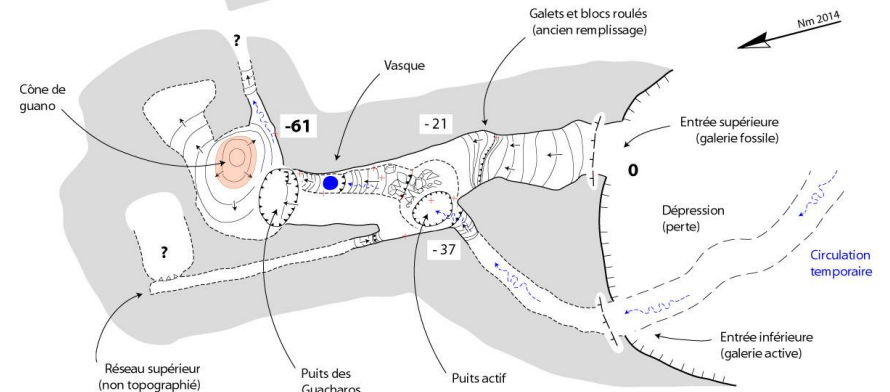
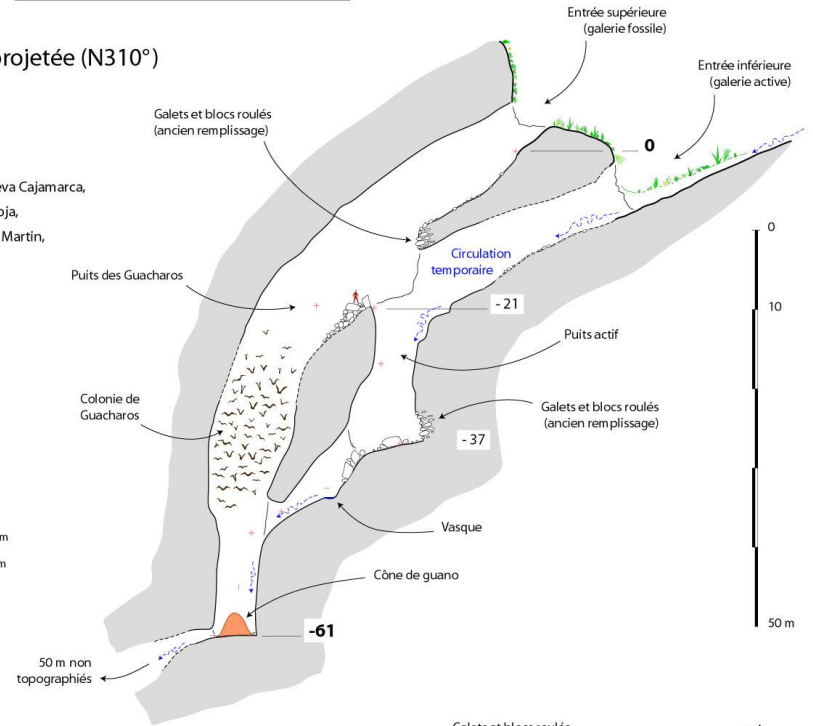
## Tragadero de Bellavista

Coordonnées :  
Longitude : -77,5997  
Latitude : -5,9070  
Altitude : 1450 m

COUPE projetée (N310°)

Bellavista  
District de Nueva Cajamarca,  
Province de Rioja,  
Région de San Martin,  
Pérou

Développement topographié : 104 m  
Dénivellation : 61 m



PLAN

43 – Flore



Flora of Alto Mayo rainforests.

## 44 – Rio Negro

During a previous exploration, 800 m have been surveyed in the Samuel Cave, an underground river...

12-9-2014

The entrance of cave is remoted, we have to walk during 3 hours in the jungle.  
We are 8 : Ezio, Lilia, Augusto, Lobinho, Jean-Denis, James, Patrice and Jean-Yves, more the guide Samuel Quiste.

---

## 45 – Rio Negro



The hiking is long and the end of route takes place in the waterfalls very slippery.  
The water come from the entrance of Samuel Cave.



12-9-2014

## 46 – Rio Negro



We have to take care to do not slip on the mossy rocks.

## 47 – Rio Negro



Suddenly, Jean-Denis dislocates his shoulder and tears his ligaments. He suffers and can't continue, he have to wait us at the entrance of cave. This place is not comfortable, because it blows a cold air flow.

12-9-2014

But the exploration of Samuel Cave cannot wait. We have to continue our mission and above all go out at 4 o'clock (pm). Because we want to go down the waterfalls in safety conditions, before the night.



## 48 – Samuel Cave

The cave is huge and occupied by Guacharos colony.

The accumulation of blocks and guano forms a big dam holding back the water of large and deep lake.





## 49 – Samuel Cave

There are two targets : continue the exploration to the upstream of the river or explore a great chamber with big stalagmites.



12-9-2014



Few stalagmites are cut by earthquake. James choose some one (more little) for his paleoclimatic researchs.

## 50 – Samuel Cave

At the upstream, the exploration continue.  
A big waterfall stands in front of us.



At the top of this waterfall,  
Samuel Quispe explores again  
200 m and comes back saying  
the cave is finished...

However, the air flow is there.  
It's just a stalagmitic barrier.  
Behind, the gallery continues.  
Now, the Samuel Cave  
is 1280 m long.

## 51 – Samuel Cave



The exploration  
is over now.  
We have to come back  
to the entrance at 4,  
before the night.

## 52 – Samuel Cave

The return is too long (3 hours) and we have to walk in the darkness.

Samuel notices an interesting insect particular of the amazonian forest.



## 53 – *Palestina Camp*



The Palestina Camp is installed in the rainforest.  
And it's common to see animals...

---

---

## 54 – *The Batrachians*

At night, a big frog cross the Palestina Camp.

But, it's amazing because Celmira, that lives here for a long time, has never seen this strange batrachian before...



## 55 – *The insects*

Here, the insects are generally a large size...



But absolutly inoffensive.



## 56 – The snakes

In the rainforest, it exists two types of snakes :  
« very pretty » as this one in the Toilet Camp.



And then more « very nasty »  
as this one living in jungle :  
the fear of farmers.



## 57 – Yuracyacu River

We have to survey the Tragadero del Rio Yuracyacu explored yesterday. Ezio and Lobinho accept this mission. While Jean Loup, Nathalie, Jean-Yves and Anne visit this astonishing cave located near the river.



13-9-2014

This Tragadero is a sinkhole of Yuracyacu River in flooding. In low water, we can go down to the bottom below the level of river... It's incredible, isn't it ?

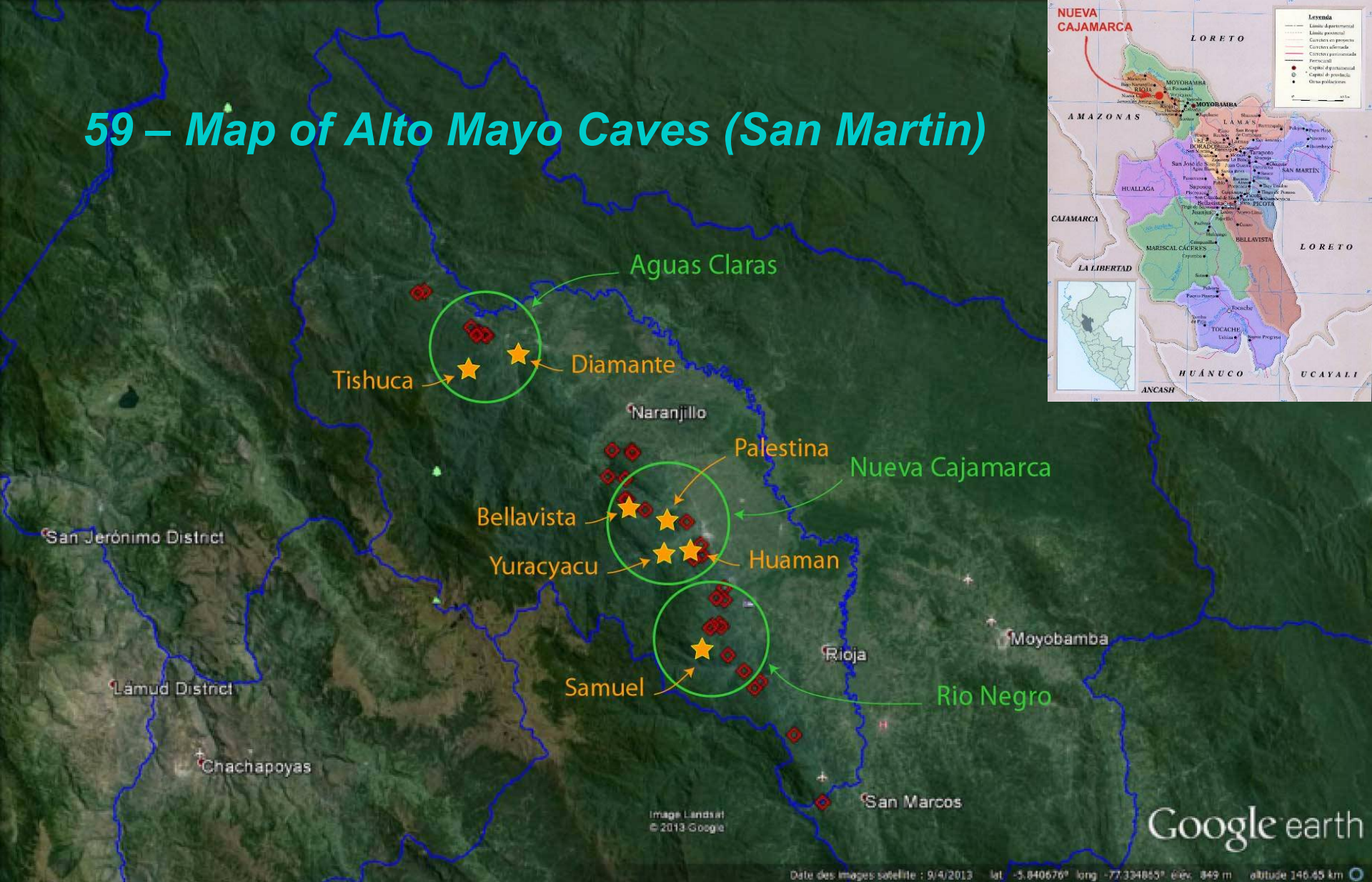
13-9-2014

# 58 – Yuracyacu River Cave



Strangely, only few little leaks of the river flow in the cave.

# 59 – Map of Alto Mayo Caves (San Martin)



The caves explored in 2014 are located in three sectors :  
Aguas Claras, Nueva Cajamarca and Naciente del Rio Negro.

## 60 – Palestina Cave

13-9-2014



This afternoon, the cable installation are inaugurated by the local authorities of Nueva Cajamarca. There are many people inside the cave. They want to visit the wild parts of cave.

## 61 – Palestina Cave

Elmer Cruz and  
Jean-Yves Bigot  
take some pictures  
in the river.



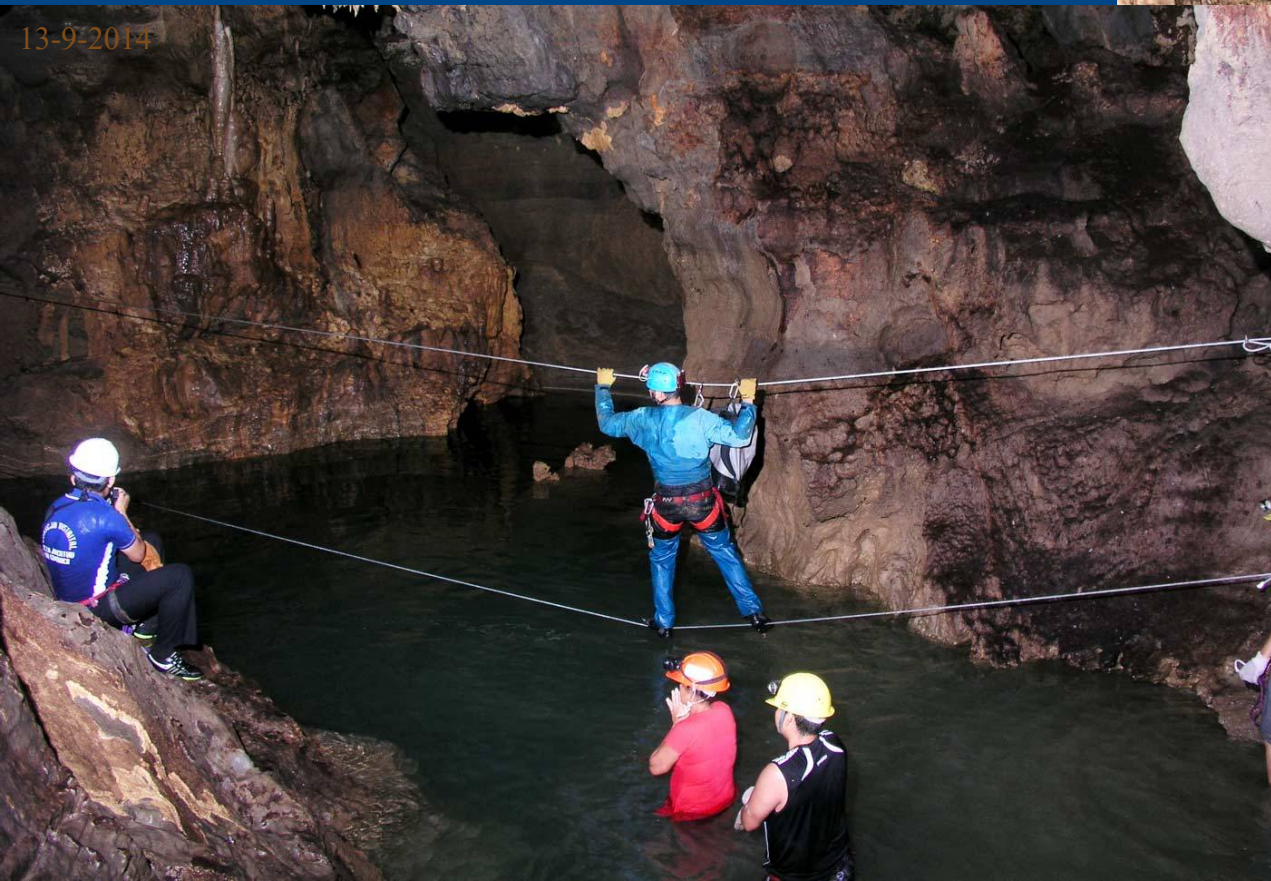
13-9-2014



Some  
models  
accept to  
parade.

## 62 – Palestina Cave

The most of Peruvian people don't swim and the cables are very useful.



Everybody cross on the cables, except few of them that decide to swim in the lake.

## 63 – *The Last Picture before Departure to Tarapoto*



In the top, from left to right : Jean Loup Guyot, Sonia Bermudez, Ezio Rubbioli, Maira Ester Bustamente Torres, Daniel Llatoma Vasquez, Jean-François Perret, Patrick Romieux, William Santini, Nathalie et Jean-Denis Klein, Jhan Carlo Espinoza, Luis Alberto Maza Saavedra and Claudio Maza Carhuatocto.

In the bottom, from left to right : Lilia Senna-Horta, Alexandre Lobo, Anne Grégoire, Clémentine Junquas, Celmira Guevara, Lazaro Herrera Ruiz and his daughter.

## 64 – *The End*

The End

A wide landscape photograph showing a lush green rice paddy field in the foreground, divided into rectangular plots by narrow earthen paths. In the background, a dense forest of tall trees stretches across the horizon under a bright blue sky with scattered white clouds. The overall scene is peaceful and rural.